

AUSTRALIAN SUBMARINE RESCUE VEHICLE (ASRV) REMORA

FACT SHEET

Depth: >500m

Angle: up to 60°

Internal Pressure: Up to 5 Bar

Max current: 3 knots (constant current from surface to 500m+)

Power: Unlimited (supplied through electro-fibre optic umbilical)

Cameras: 6 including internal skirt, internal bell, 2 forward, 1 aft, 1 upper

Sonar: 1 commercial sonar (300 MHz)

Navigation: Own GPS, Acoustic tracking system (transponders placed on DISSUB and built into Remora)

Skirt dewatering capability: To max operating depth independent of submarine

Skirt Compatibility: NATO dimensions. Adaptor can be fitted to flanged arrangement at bottom of skirt.

Capacity: 6 survivors + 1 attendant

Operators: **Surface** (civilian): **Remora Operations:** SERS Manager, Pilot, Navigator, Ops Supervisor, Winch Operator, LARS operator, deck hands (umbilical float placement/removal) – 2 shifts permitting 24 hour operation. **Surface:** (Service): **Command & Control:** Coordinator Rescue Forces – 2 x LCDR/CMDR, 2 x Communications numbers. **Medical:** Several Underwater medicine-qualified doctors and medics, Clearance Divers (Chamber operators, general hands). **In Bell:** Bell Operator (civilian)

Hyperbaric Treatment Capability: 36 survivors in two 9m Decompression Chambers joined to 6m Transfer Under Pressure (TUP) chamber

Injured personnel capability: Yes. Lift via harness and mountain rescue hoist.

Lower same arrangement into TUP Chamber

Rescue Cycle time: 3 hours

Portability: Aircraft: An-124, C-5, 2 x C-141, 10 x C-130. System makes extensive use of ISO shipping container. No single component is too big for a C-130. Road: standard truck for ISO container

Mother Ship Requirements: 300 m² clear deck space, preferably at least 8m wide

Surface Sea State Limitations: Sea State 5 (significant wave height 4m)

Launch and Recovery System (LARS): A Frame as part of system

A Frame: Mounted to Deck Support Assembly (“H” Frame) which spreads load across several of the ship’s frames and permits rapid mobilisation once welded to deck

Electrical Power: 440V 60Hz 3 phase 495 kW. One Genset incorporated in suite but could hire at embarkation port (2 sources of power required for redundancy)

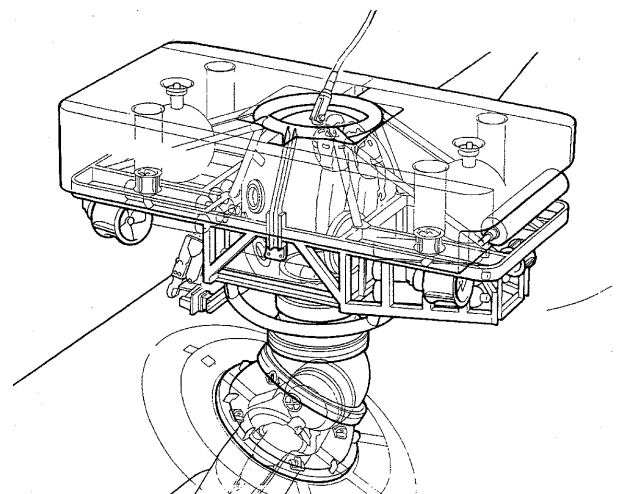


Fig: Artist's Impression of Remora mated to DISSUB